

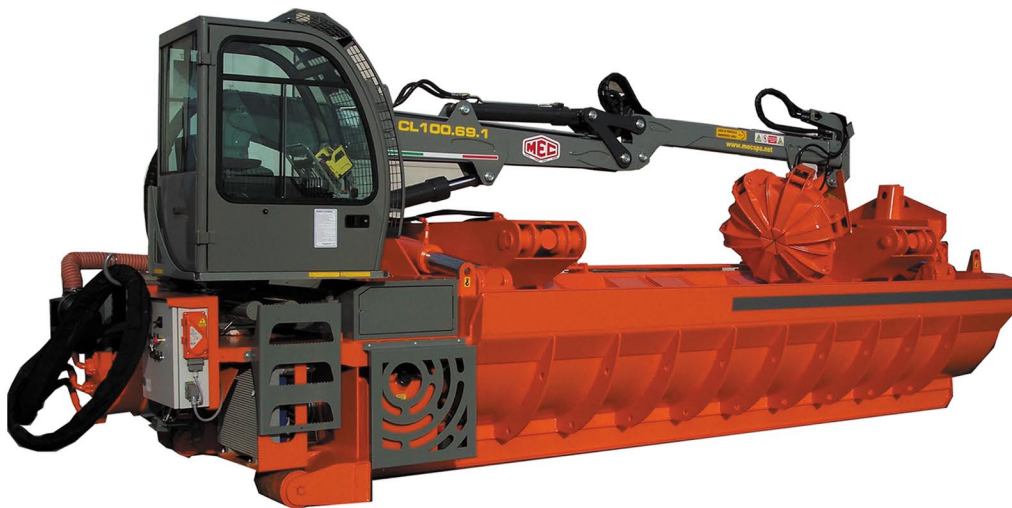
S-SERIES STEEL BALER & LOGGING MACHINES

A Proven Solution Worldwide

S.4800 / S.5250 / S.6000 MODELS



- * Three portable roll-off or flatbed compatible models to choose from
- * Standard radio remote control
- * Optional crane with scrap grapple, auto ejection door and more
- * Cummins diesel engine or electric motor
- * Increased crushing power, speed & production
- * Save space and move material faster



Since 1919

GENSCO

GENSCO AMERICA, INC

5307 Dividend Dr., Decatur, Georgia 30035 • Tel: 770 808-8711 • Fax: 770 808-8739

GENSCO EQUIPMENT (1990) Inc

53 Carlaw Ave., Toronto, Canada M4M 2R6 • Tel: 416 465-7521 • Fax: 416 465-4489

email: info@genscoequip.com • www.genscoequip.com



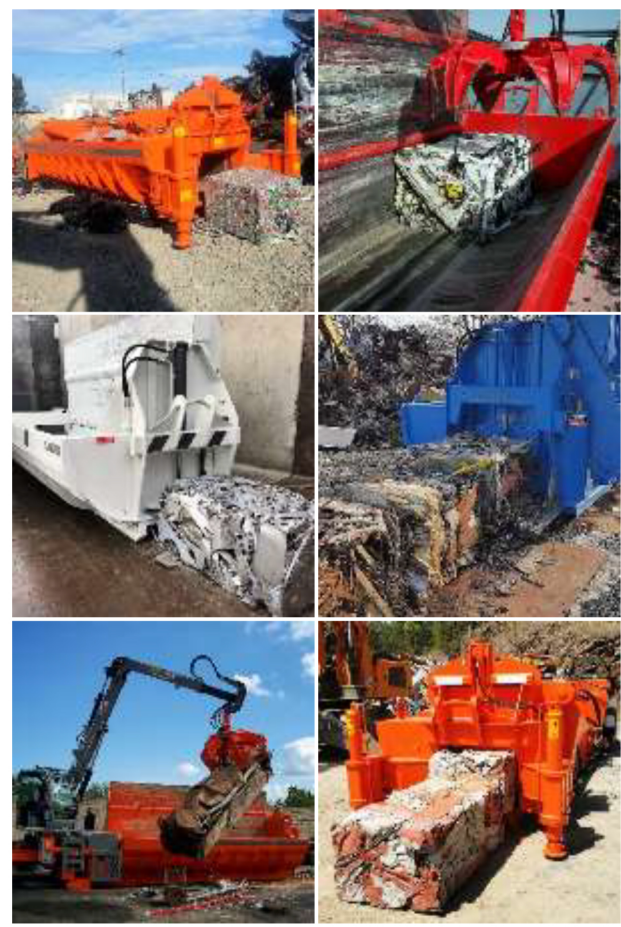
ACROSS USA 800 268-6797

S-SERIES STEEL BALER & LOGGING MACHINES

A Proven Solution Worldwide

Designed for scrap metal, strong, fast & durable, built with the highest quality components for processing a variety of material. Powerful Folding Wing Technology - Perfect for small to mid-size scrap yards, MRF or transfer stations. Metal / automotive bodies with or without engines/ Stainless / Cans/ HMS #1 & 2 / Light Iron and more...

- Portable or Stationary prepared for Roll-off or Flatbeds
- Cummins Diesel Engine or Electric Motor *
**Optional Tier 4 Diesel Engines*
- Automatic Baling and Logging Cycles
- Remote radio control with operator controls
- Optional: Crane with servo controls & rotating grapple
- Optional: Full Auto ejection door/hydraulic Legs
- *Baling: up to 16 Tons per hour*
- *Logging: up to 22 Tons per hour*
- *Automobile Logging: up to 28 Tons per hour*



COMPRESSION BOX		S.4800	S.5250	S.6000
Compression box length	mm/ft	4,800 / 15.75	5,250 / 17.25	6,000 / 20
Compression box width (covers open)	mm/inch	1,730 / 68	1,730 / 68	1,730 / 68
Bale dimensions	mm/inch	850x650 / 33x25xvar	850x650 / 33x25xvar	850x650 / 33x25xvar
Lid cylinder compression force (covers)	mt	360 ÷ 4	360 ÷ 4	360 ÷ 6
Bale cylinder compression force (ram)	mt	150	150	150
Length during transport (baler only)	mm/ft	8000 / 26	12,000 / 40	14,350 / 47
Cummins Diesel or Electric Motor	HP	140	150	175
Constant variable axial piston pump	Bar/PSI	280 / 4,060	280 / 4,060	280 / 4,060
Radio control pendant (wireless)	Standard	✓	✓	✓
Auto Ejection door / box cleanout	Optional	✓	✓	✓
Radio remote control	Optional	✓	✓	✓
Crane with servo controls, rotating grapple	Optional	✓	✓	✓
Lifting jack stabilizing legs (loading/unloading)	Optional	✓	✓	✓
Roll-on/Roll-off system	Standard	✓	✓	
Weight (baler only)	kg/lbs	23,500 / 51,800	25,000 / 55,120	28,000 / 62,720

specifications subject to change without notice



Since 1919



GENSCO AMERICA, INC **ACROSS USA 800 268-6797**
5307 Dividend Dr., Decatur, Georgia 30035 • Tel: 770 808-8711 • Fax: 770 808-8739

GENSCO EQUIPMENT (1990) Inc
53 Carlaw Ave., Toronto, Canada M4M 2R6 • Tel: 416 465-7521 • Fax: 416 465-4489
email: info@genscoequip.com • www.genscoequip.com

